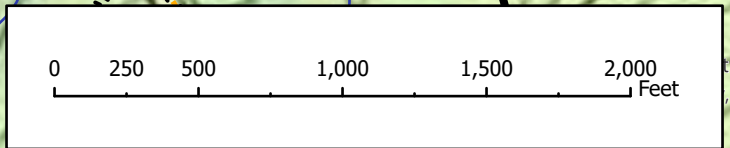


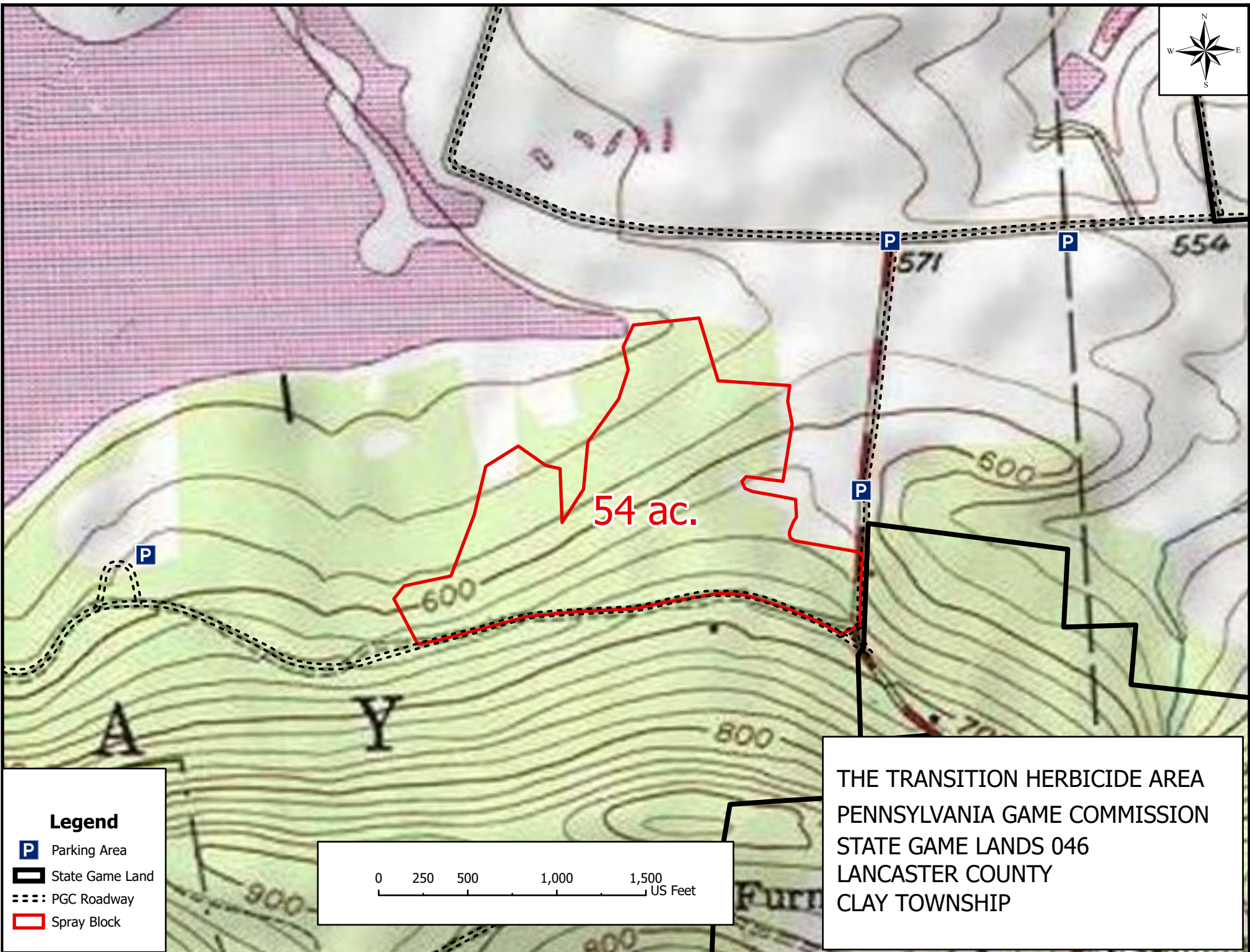
HERBICIDE AREA

- ▲ Gate
- Stream
- Existing Trails
- ==== PGC Roadway
- ▨ Spray Blocks
- ▭ State Game Land





PGC GATE & CLARKS VALLEY ROAD (SR325)
40.45321, -76.77292

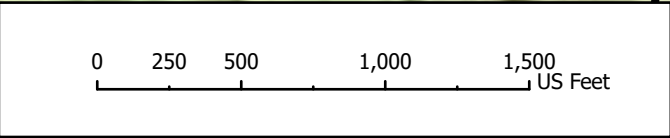


FASTER PACE HERBICIDE AREA
PENNSYLVANIA GAME COMMISSION
STATE GAME LANDS 211
DAUPHIN COUNTY
RUSH TOWNSHIP
48 ACRES

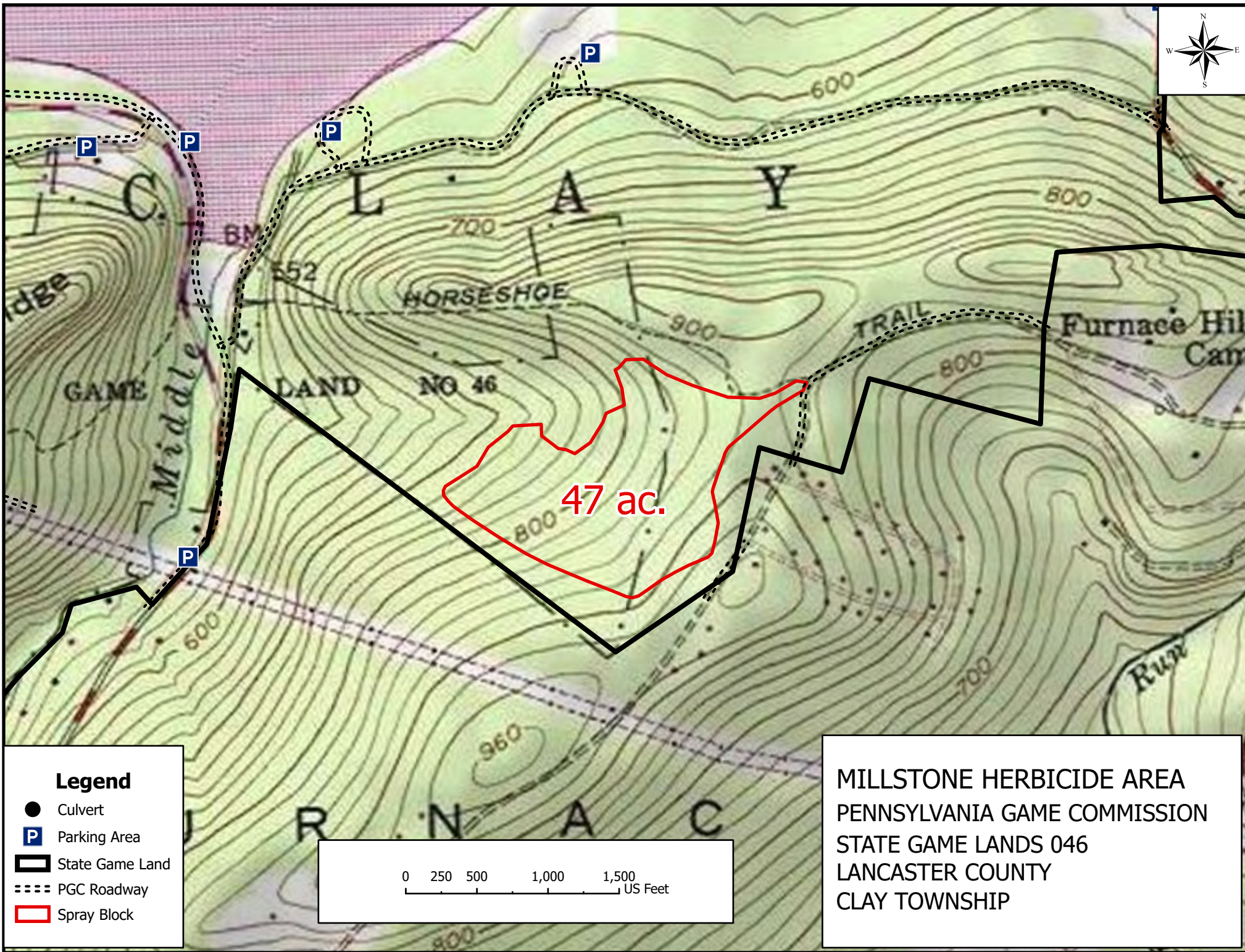


Legend

-  Parking Area
-  State Game Land
-  PGC Roadway
-  Spray Block

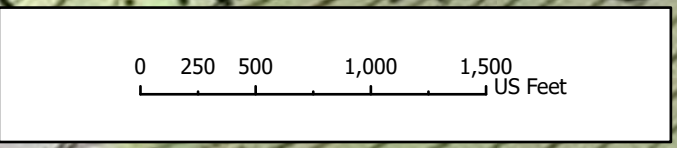


THE TRANSITION HERBICIDE AREA
PENNSYLVANIA GAME COMMISSION
STATE GAME LANDS 046
LANCASTER COUNTY
CLAY TOWNSHIP

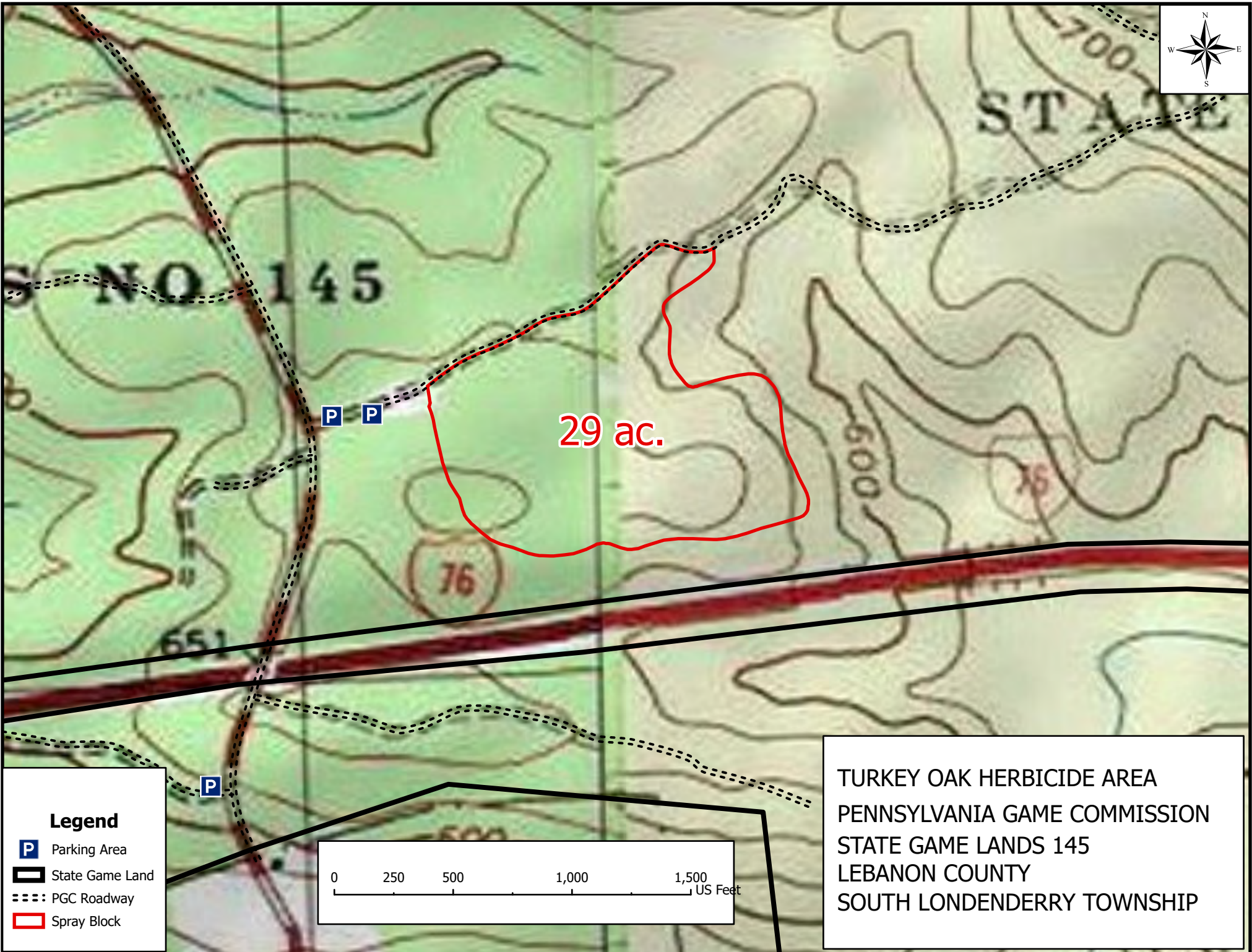


Legend

- Culvert
- P Parking Area
- ▭ State Game Land
- ⋯ PGC Roadway
- ▭ Spray Block

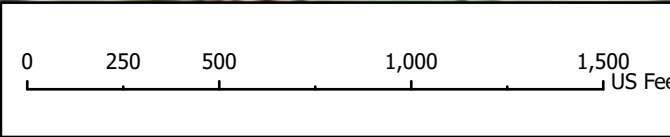


MILLSTONE HERBICIDE AREA
 PENNSYLVANIA GAME COMMISSION
 STATE GAME LANDS 046
 LANCASTER COUNTY
 CLAY TOWNSHIP



Legend

- Parking Area
- State Game Land
- PGC Roadway
- Spray Block



TURKEY OAK HERBICIDE AREA
PENNSYLVANIA GAME COMMISSION
STATE GAME LANDS 145
LEBANON COUNTY
SOUTH LONDENDERRY TOWNSHIP